

**OBEN**

Customer satisfaction is our top priority,  
and we consider it our greatest reward.

**HEAD OFFICE & SHOWROOM**  
# 962, 7th Main, 24th Cross  
MCECHS Layout, Jakkur Road,  
Bangalore - 560077, Karnataka,  
INDIA

**ASSEMBLY UNIT I**  
Plot No. EL90, 1st Floor, TTC Industrial Area,  
MIDC Electronic Zone, Mahape,  
Navi Mumbai - 400 710,  
Maharashtra, INDIA

**GODOWN**  
# 191/2, 2nd Stage,  
13th Cross Road, HBR Layout,  
Bangalore - 560045, Karnataka,  
INDIA

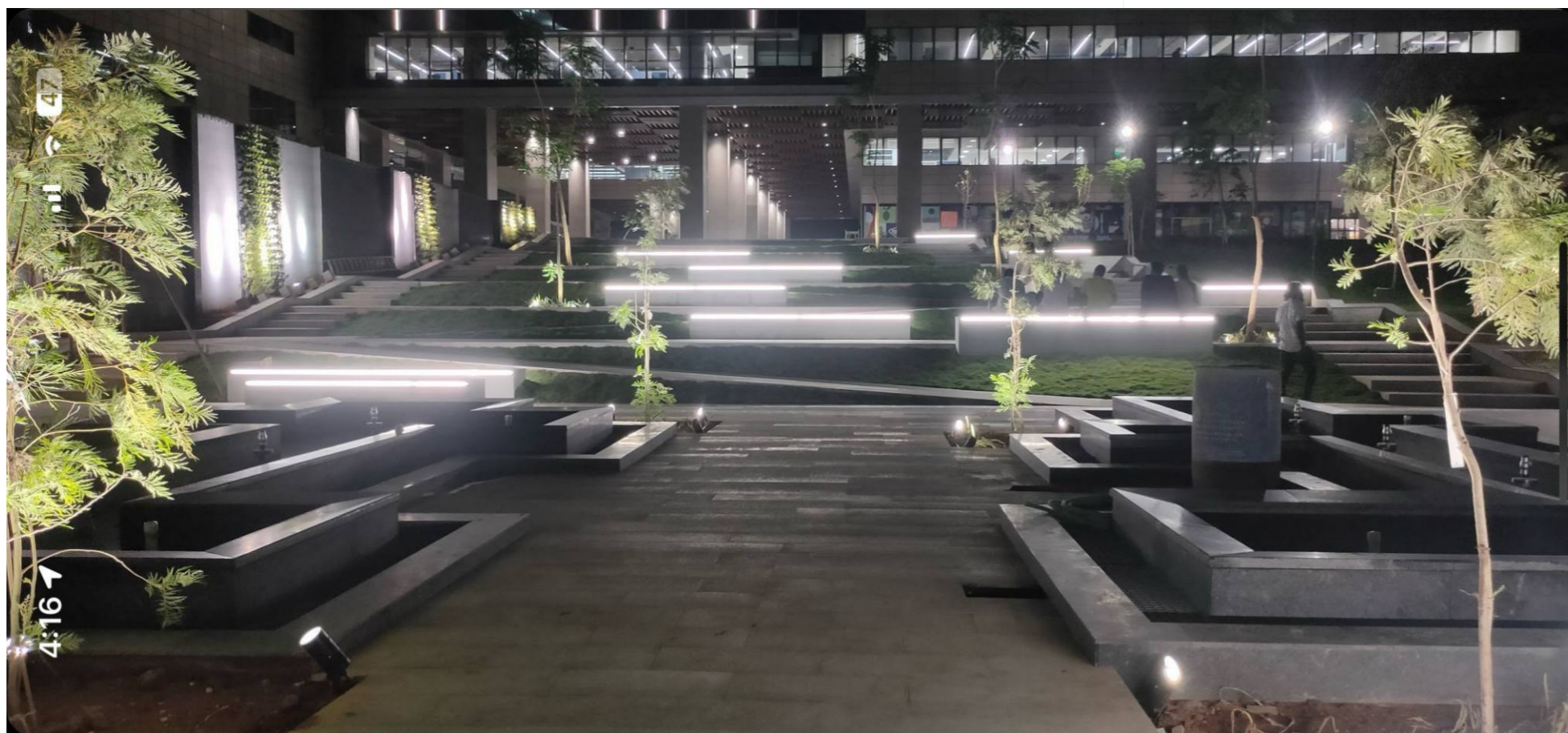
M: +91-99861 63633 | E: ledluxsolutions@gmail.com / info@obenindia.com | W: www.obenindia.com

**OBEN**

## Company Profile

[www.obenindia.com](http://www.obenindia.com)





ONE PARAMOUNT, CHENNAI

## We are OBEN

Since our inception in 2002, we have been a leading dealer of lighting products, proudly contributing to numerous prestigious projects across India. Over the past 15 years, we have partnered with various clients, delivering innovative and challenging solutions tailored to their unique needs.

The lighting industry has undergone a significant transformation with the advent of LED technology, leading to a surge in demand for high-quality lighting solutions. To navigate the competitive market, we utilize advanced testing equipment to ensure our products meet the highest quality standards.

In 2007, we partnered with renowned global companies to introduce world-class lighting products under our brand, **OBEN**. We are committed to using only the finest raw materials and components to manufacture our luminaires.

With 18 years of industry experience, we collaborate closely with our clients to provide economical and energy-efficient lighting solutions. To reinforce our commitment to quality, we offer a 5-year warranty on all our luminaires.

At **OBEN**, customer satisfaction is our top priority, and we consider it our greatest reward.

### Our Vision & Commitment

To be a global leader in innovative and sustainable lighting solutions, illuminating spaces while enhancing energy efficiency and customer satisfaction.

At **OBEN**, we are committed to delivering high-quality, energy-efficient lighting products that meet the evolving needs of our clients. We strive to innovate and collaborate with industry leaders to ensure our offerings set the standard for excellence in the lighting industry. Our mission is to empower our customers with smart lighting solutions backed by our expertise, a strong warranty, and unparalleled customer service.



Happy Customers

350+



Experience

23yrs



Projects Completed

850+



## Showroom

This dedicated space showcases a wide range of architectural and decorative lighting solutions, carefully curated to meet the diverse needs of our clients. From elegant chandeliers and pendant lights to modern outdoor fixtures and customized solutions, our gallery offers something for every style and application.

## Godown

Behind every successful lighting project is a robust and well-organized supply chain. At OBEN, our godown is the cornerstone of our operations, equipped with a vast stock of high-quality lighting products to ensure timely delivery and project execution.



# NEXITY Hyderabad

NEXITY, located in the heart of Hyderabad's Hi-Tech City, is a prestigious commercial business park featuring state-of-the-art infrastructure and iconic towers. We had the privilege of executing the complete lighting solutions for this landmark project, including indoor, outdoor, façade, and landscape lighting.

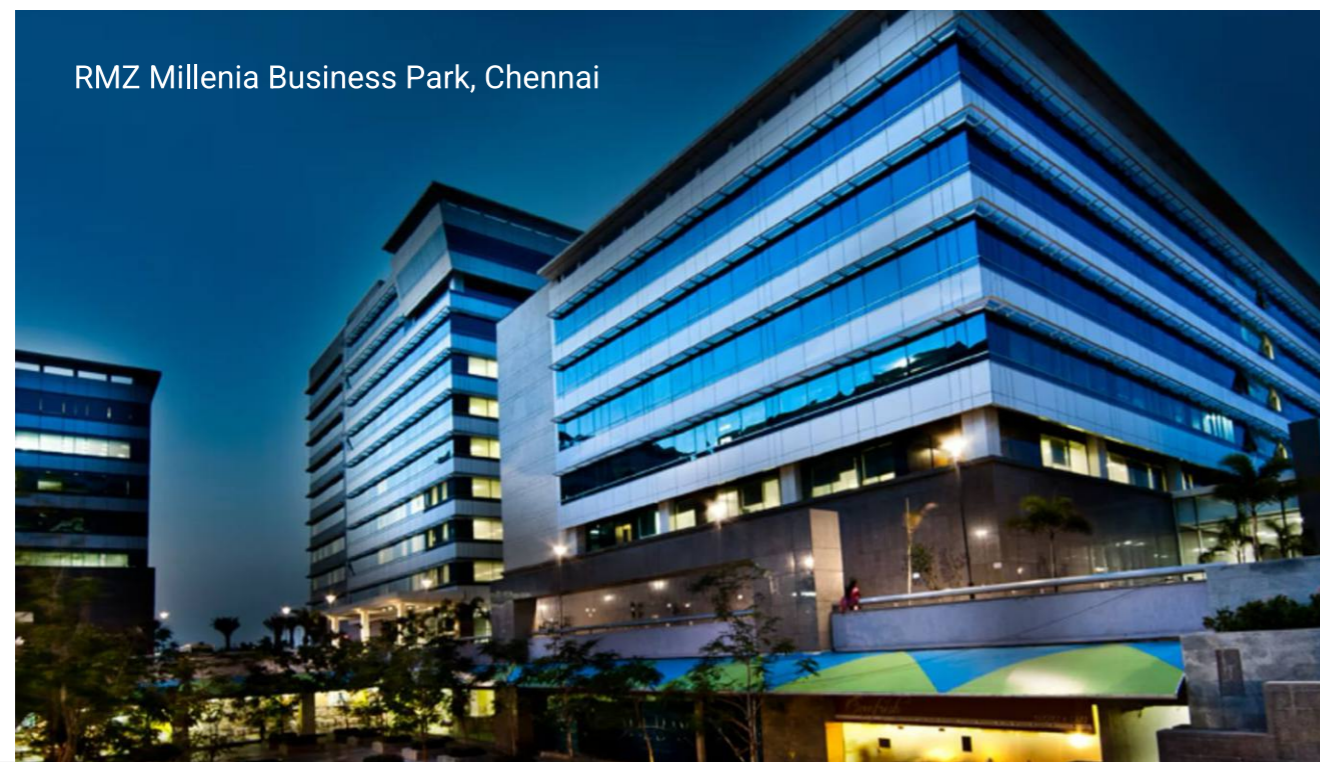
Collaborating with esteemed international clients such as BSLD, Bluestar, and L&W, we delivered innovative and high-quality lighting designs that perfectly complement the architectural brilliance of this modern business hub.





## Why Choose OBEN?

- ✦ High-Quality LEDs: Equipped with German technology, ensuring longevity and superior performance.
- ✦ Exceptional CRI Values: Accurate color rendering for a luxurious lighting experience.
- ✦ European Standards: Lighting solutions that meet international benchmarks.
- ✦ Customization Expertise: Tailor-made designs to suit unique requirements.
- ✦ Wide Product Range: From decorative lights to commercial solutions, we offer versatility for every project.



## Our OEM Partners

**TRIDONIC** (Serbia)



Tridonic is the world's leading high quality manufacturer for Indoor and Outdoor Drivers having units in various countries.

**CREE** (USA)



CREE is one of leading global manufacturer of variable LEDs, COB and SMD. Our all SMD based PCBs are incorporated with CREELEDs with CRI>85

**MW**  
**MEAN WELL** (Taiwan)



MEAN WELL is a taiwan based company manufacturing world's best power supplies for LEDs for more than three decades. Our outdoor luminaires are equipped with MEAN WELL IP65 drivers.

**OSRAM** (Germany)



VOSSLOH SCHWABE is a German based company producing highly efficient COB and Electronic Control Systems with backup warranty of 5 years.

**carclo plc** (UK)



VOSSLOH SCHWABE is a German based company producing highly efficient COB and Electronic Control Systems with backup warranty of 5 years.

**LEDiL** (Finland)



VOSSLOH SCHWABE is a German based company producing highly efficient COB and Electronic Control Systems with backup warranty of 5 years.

Our Prestigious Projects



Bussiness park, Chennai



Spire Towers, Hyderabad

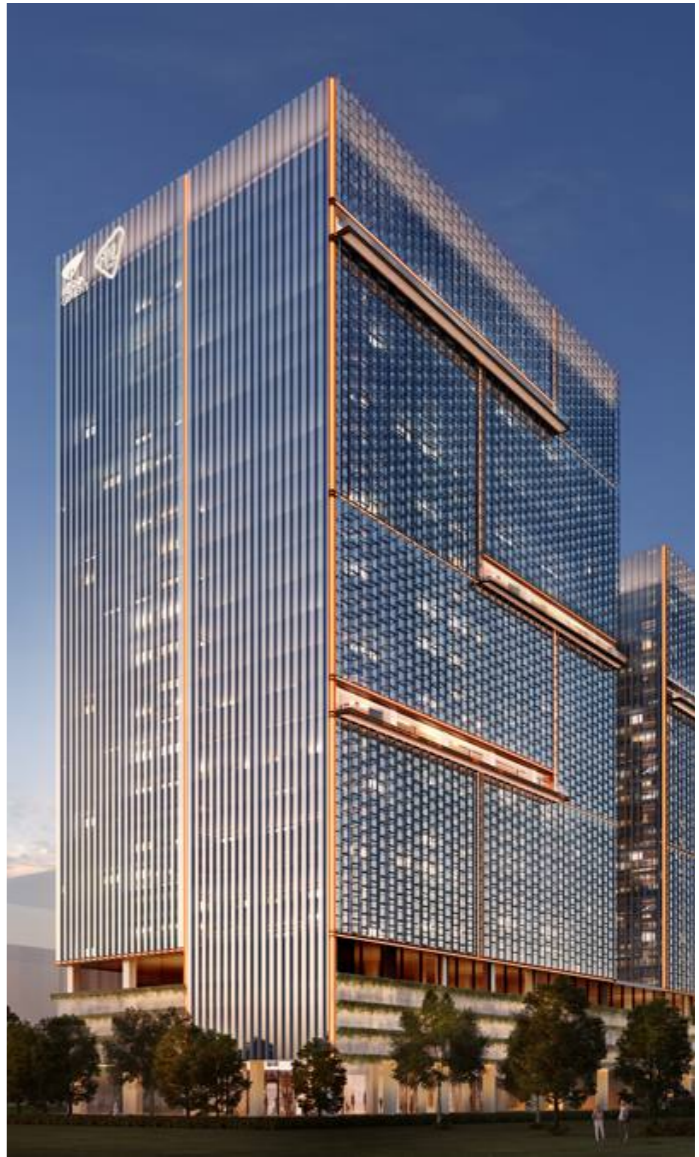


Galleria Mall, Bangalore

Our Prestigious Projects



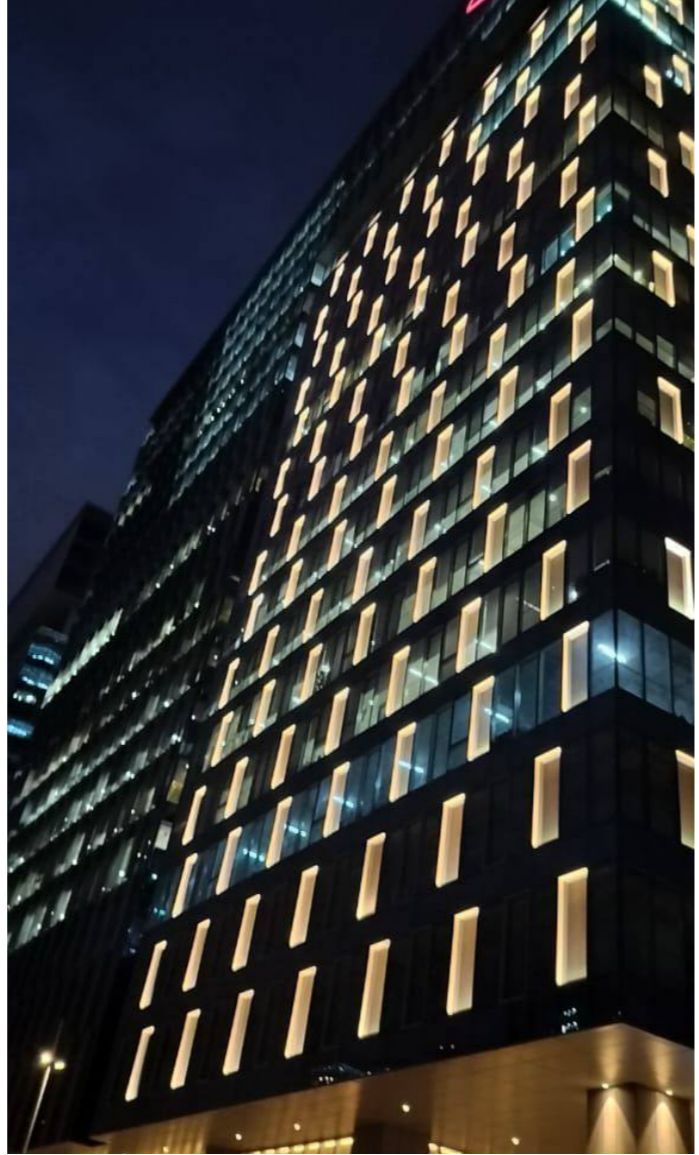
RMZ Infinity, Bangalore



Spire Towers, Hyderabad



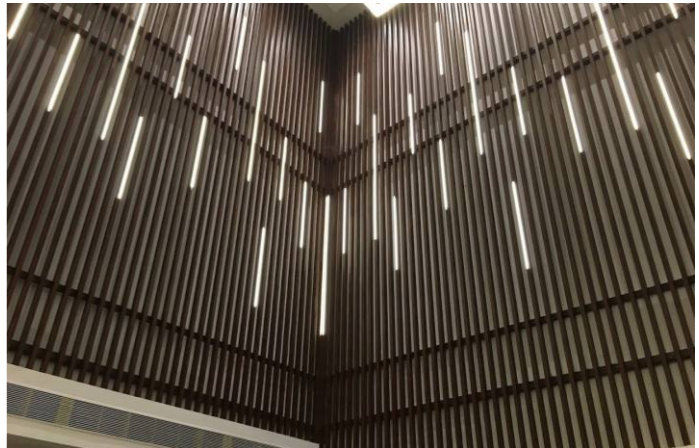
Godrej One BKC, Mumbai



Nexity, Hyderabad



OBEN EXOTICA, Bengaluru



RMZ Infinity, Chennai

Our Prestigious Projects



Double Tree by Hilton, Goa

Our Prestigious Projects



Labzone Lifescience Park, Bengaluru



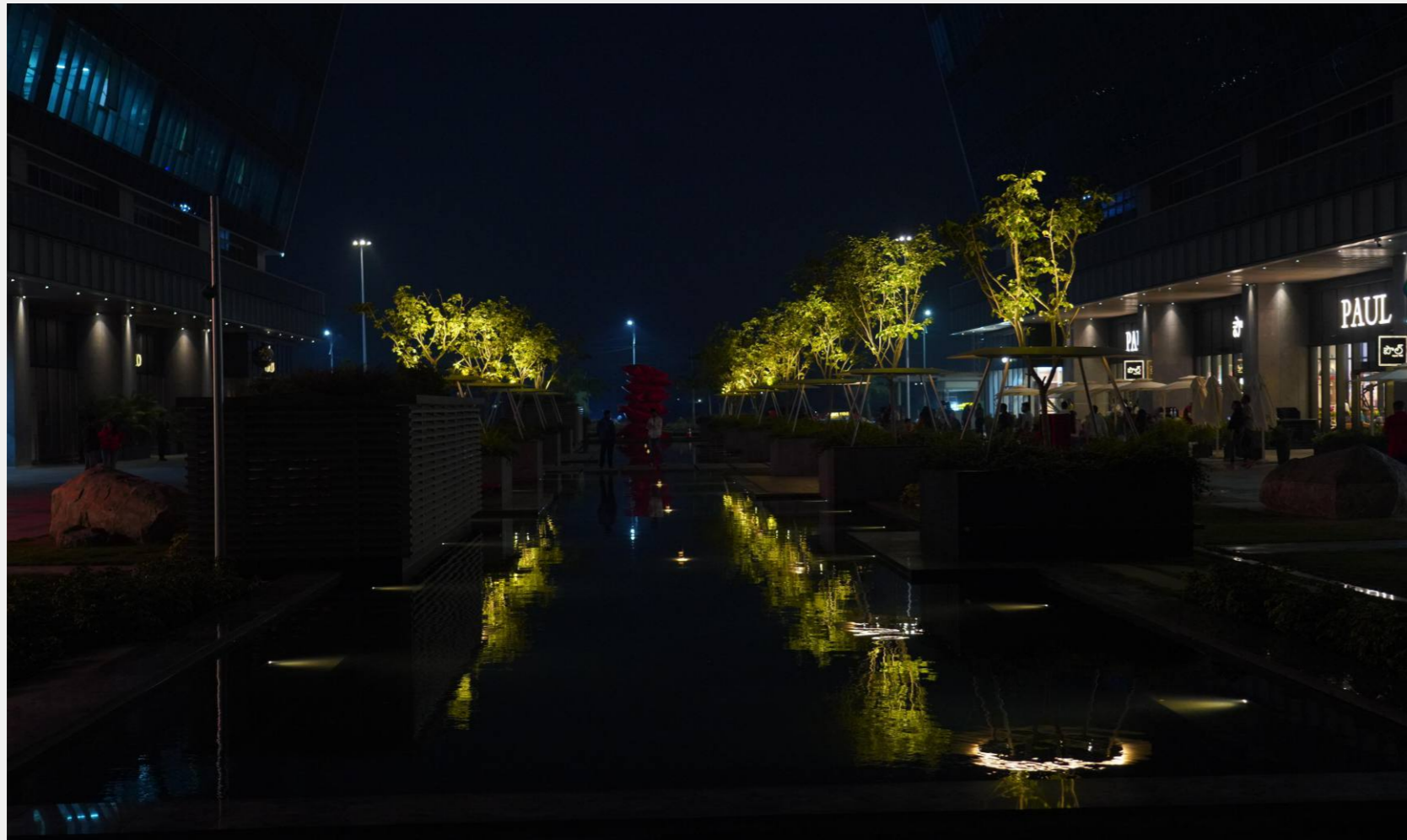
Courtyard by Marriot, Bengaluru



Coworks Office Space, Bengaluru & Chennai



Hilton, Goa



## CUSTOMISED Solutions

At **OBEN**, we take pride in our ability to deliver tailored lighting solutions that seamlessly blend with the project requirement, functionality, and aesthetic appeal. Our expertise in customization ensures every project is unique and perfectly suited to the client's vision.

A prime example of our customization capabilities is our work for **Nexity**, where we designed and installed bespoke tree-mounted luminaires. These lights not only highlighted the natural beauty of the trees but also provided an ambient glow that transformed the space into a captivating nighttime experience. Each luminaire was meticulously crafted to fit the project's exact requirements, showcasing our commitment to detail and client satisfaction.

